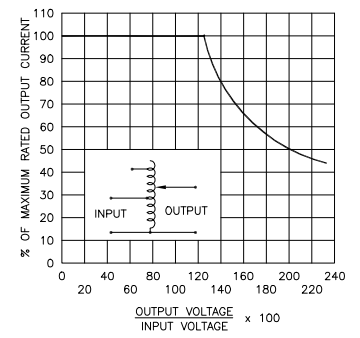
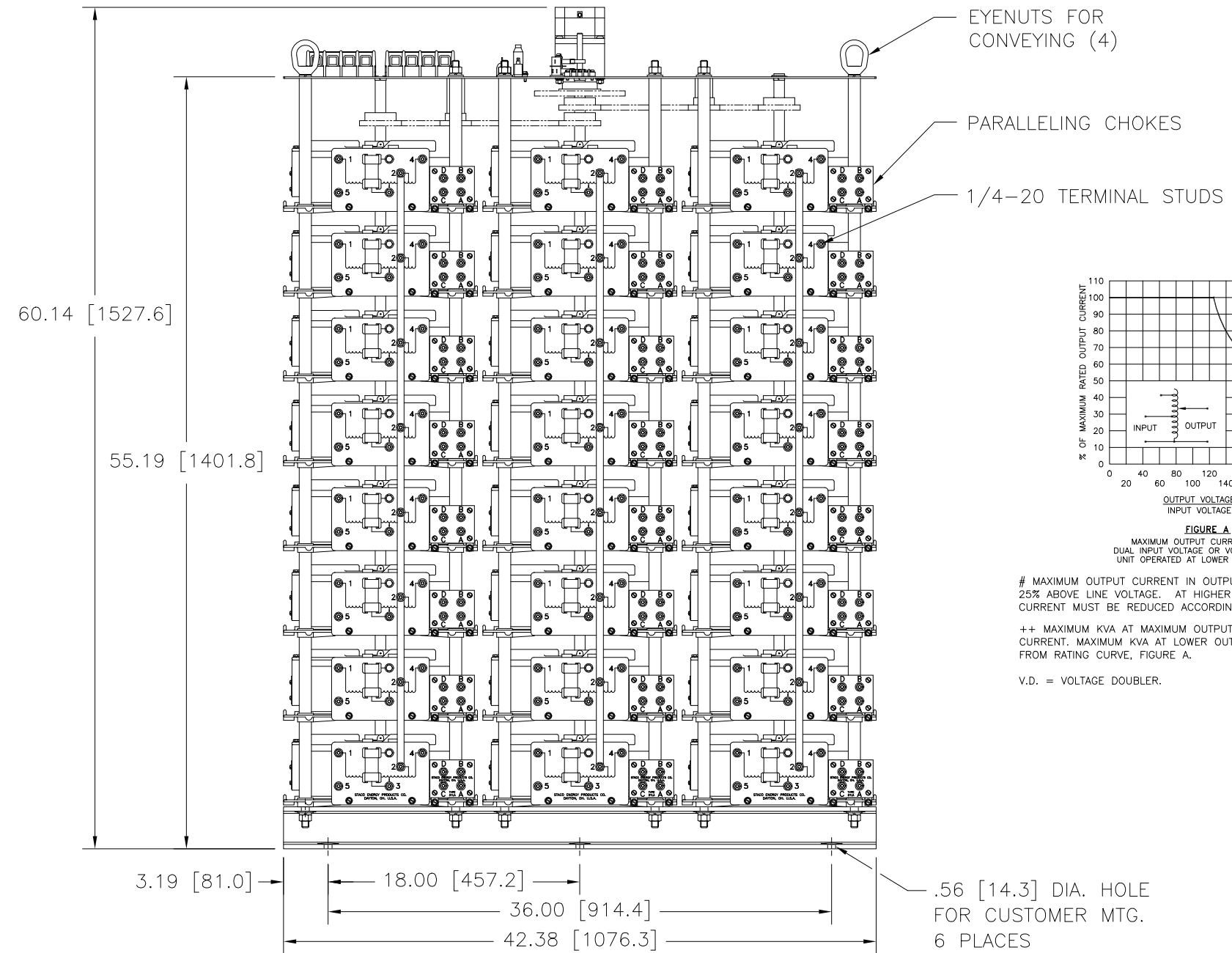
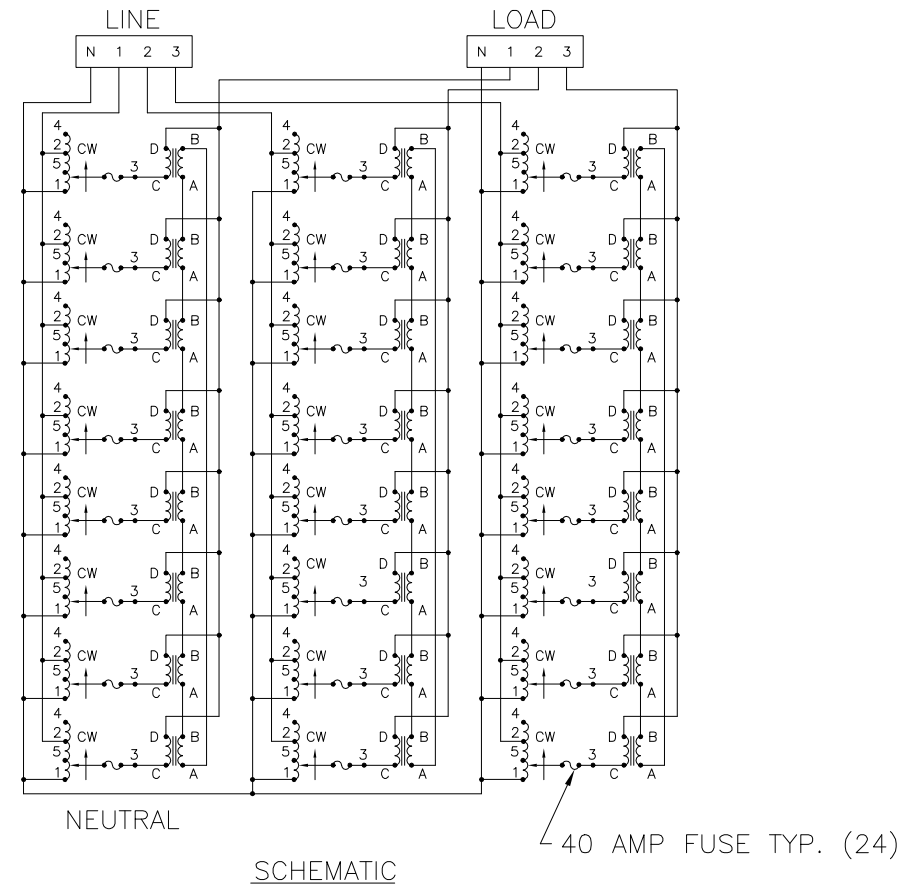
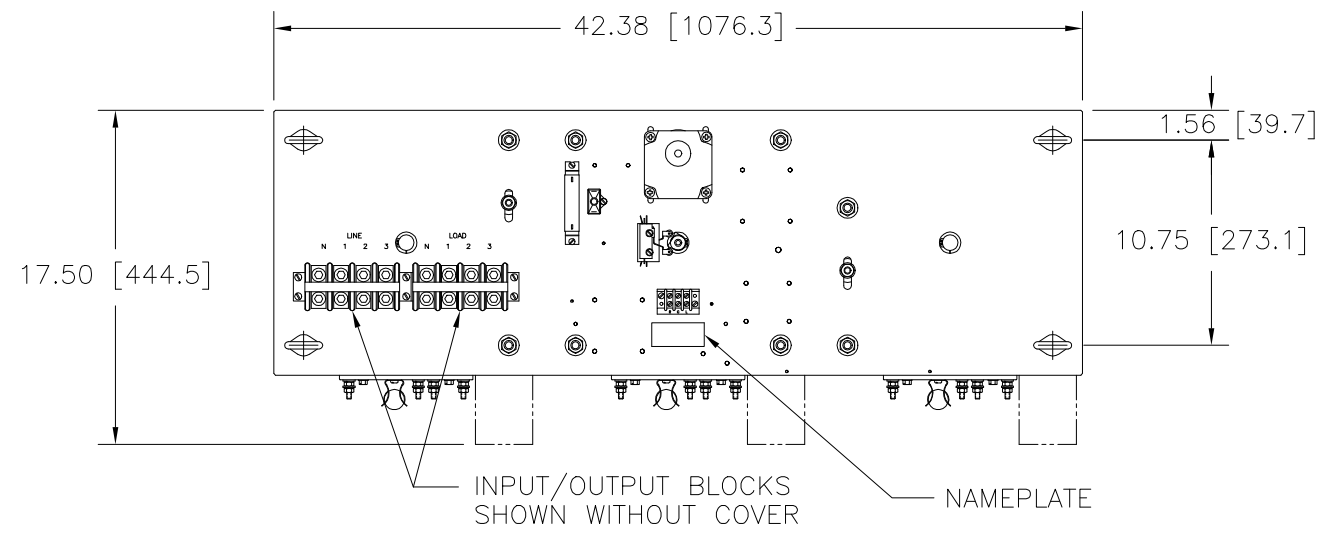


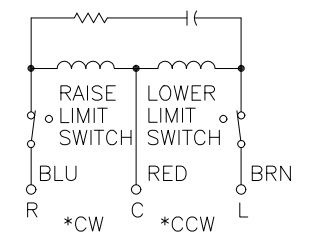
DWG. NO.	032-8720		
REVISIONS			
SYM.	E.C.N.	DATE	APVD.
A	24482	1/24/01	
REVISED & UPDATED			
B	24936	11/8/02	
UPDATED TO NEW MTR.			



MAXIMUM OUTPUT CURRENT IN OUTPUT VOLTAGE RANGE FROM 0 TO 25% ABOVE LINE VOLTAGE. AT HIGHER OUTPUT VOLTAGES, OUTPUT CURRENT MUST BE REDUCED ACCORDING TO RATING CURVE, FIGURE A.

++ MAXIMUM KVA AT MAXIMUM OUTPUT AND CORRESPONDING DE-RATED CURRENT. MAXIMUM KVA AT LOWER OUTPUT VOLTAGES MAY BE CALCULATED FROM RATING CURVE, FIGURE A.

V.D. = VOLTAGE DOUBLER.



WIRING	INPUT		OUTPUT		SHAFT ROTATION FOR VOLTAGE INCREASE	TERMINAL CONNECTIONS FOR INCREASING VOLTAGE AS VIEWED FROM TOP		
	VOLTS	HERTZ	VOLTS	CONSTANT CURRENT LOAD		INPUT	OUTPUT	
				MAX. AMPS				MAX. KVA
THREE PHASE WYE	480	50/60	0-480	280	232.5	CW	4-4-4 D-D-D	
		60	0-560	280	271.3	CW	2-2-2 D-D-D	
	240	60	0-560	280 #120 V.D.	116.3 ++	CW	5-5-5 D-D-D	

UNLESS OTHERWISE SPECIFIED, TOLERANCE IS ±	DECIMALS	HOLES	ANGLES	DRAFT	UNITS
.XX	.12	.03	1°	1-1/2°	IN [mm]
MATERIAL: ALL DIMENSIONS APPLY AFTER PLATING					
TITLE: SPECIFICATION CONTROL DRAWING					
MOTORIZED VARIABLE TRANSFORMER					
TYPE: 60M6020-24Y					
DRAWN BY	DATE	FIRST USED ON	DO NOT SCALE DWG.		
TIM RAU	7/31/96				
CHECKER	DATE	WEIGHT APPROX.	CAGE CODE		
			83008		
ENGINEER	DATE	SCALE	SHEET 1 OF 1	DWG. NO.	
		.2=1		032-8720	

